

Craftsmanship

HMW Forge is our signature hardware collection, offering over 350 hand-forged and cast brass designs, each meticulously crafted to reflect the beauty and durability of historic craftsmanship. Our skilled metalsmiths bring a deep knowledge of the trade to every piece, ensuring that each item is not only aesthetically timeless but also built to last. We carefully select the finest materials and pay close attention to every detail to ensure the highest quality.

Production

Our hardware is handmade in-house, using traditional tools, methods, and finishes passed down through generations. This commitment to ancient techniques ensures that every design is not only historically accurate but also strong and durable.

Finishing

Every HMW Forge piece is a true reproduction, hand-forged or cast in brass and finished using various techniques. Our finishes are designed to develop a unique, random pattern over time, reflecting natural aging and wear. Slight variations may occur. Custom finishes are available upon request.

Iron Finishes

Hand-forged iron hardware undergoes a meticulous finishing process designed to enhance and preserve its appearance. A generous layer of wax is applied to accentuate the texture and bolster the durability of each piece.

Brass Finishes

Solid brass hardware is cast using the "Lost Wax Process", an ancient technique used to create intricate and highly detailed objects and are available in a range of finishes. We offer protective lacquer coatings on select finishes to preserve and enhance their appearance.

Nickel Finishes

Select hardware can be nickel-plated by thoroughly cleaning the surface, then immersing it in a nickel-plating bath containing nickel salts and a conductive electrolyte. Nickel plating provides exceptional resistance to corrosion and wear, enhancing the durability of the hardware while giving it a sleek, visually appealing finish.

Care & Maintenance

To preserve the beauty of your HMW Forge hardware, gently clean each piece with a soft cloth.

Samples

We offer, for purchase, a comprehensive binder of standard metal finishes. This binder can be fully rebated against purchases, subject to certain limitations. Individual samples of standard and custom finishes are available for approval at a nominal cost.

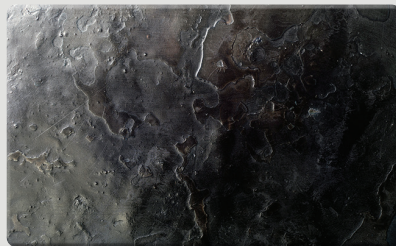
Distribution

HMW Forge hardware is currently distributed by in-house coordinators who assist with technical expertise, pricing, lead times, scheduling, and project management.

IRON



BLIR
Satin Black Exterior Iron



DWIR
Dark Wax Iron



NAIR
Natural Iron



RUIR
Rustic Iron



BLAQ
Black Lacquer

BRASS



DABS
Dark Antiqued Brass



LABS
Light Antiqued Brass



PUBS
Polished Unlacquered Brass



PLBS
Polished Lacquered Brass



BRBS
Brushed Brass

NICKEL



PONI
Polished Nickel



BRNI
Brushed Nickel



AQNI
Antiqued Polished Nickel