

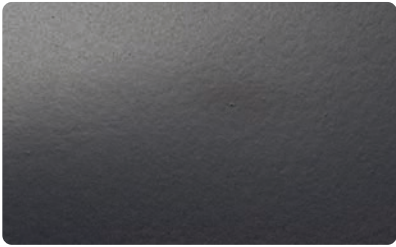
# *Heritage*

TRADITIONS LIGHTING



# OPTIONS

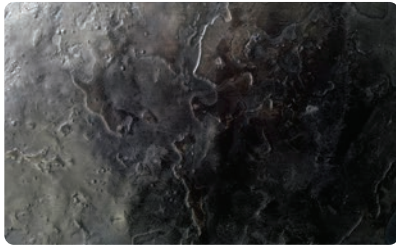
Metal Finishes



**BLAQ**  
Black Lacquer



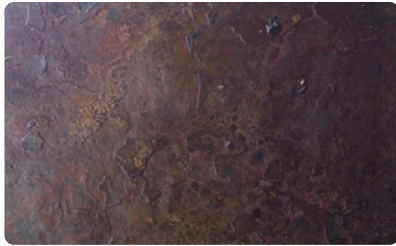
**BLIR**  
Satin Black Exterior Iron



**DWIR**  
Dark Wax Iron



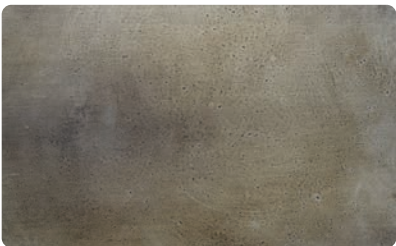
**NAIR**  
Natural Iron



**RUIR**  
Rustic Iron



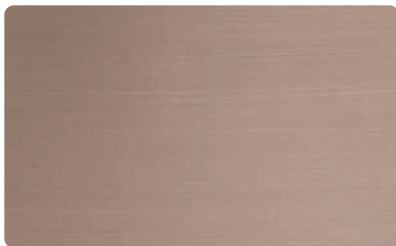
**AGTN**  
Aged Tin



**NATN**  
Natural Tin



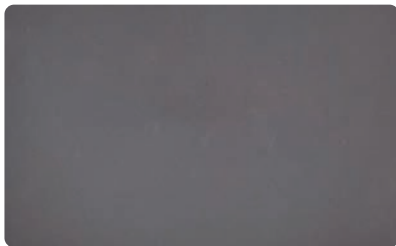
**BRTN**  
Brushed Tin



**NACP**  
Natural Copper



**LDCP**  
Leaded Copper



**BZCP | BZBS**  
Bronzed Copper | Brass



**OXCP | OXBS**  
Oxidized Copper | Brass



**PUBS | PLBS**  
Polished Brass



**BRBS**  
Brushed Brass



**LABS**  
Light Antiqued Brass

Metal Finishes



**DABS**  
Dark Antiqued Brass



**PONI**  
Polished Nickel



**BRNI**  
Brushed Nickel



**AQNI**  
Antiqued Polished Nickel

All finishes are hand-applied, something no machine can recreate. Wooden fixtures are painted with the color shown on spindles below. Metal fixtures are painted with equivalent colors (flags adjacent to spindles). With all hand-applied finishes, slight variations are possible. Custom finishes and samples available upon request.

Paint Finishes



Barn Red | Country Redwood



Mustard | Showtime



Snow White | Vanilla Milkshake



Sea Green | Mill Springs Blue



Soldier Blue | Sea Reflections



Federal Blue | Chicago Blues



Lexington | Holiday Wreath



Tavern Green | Cedar Green



Pitch Black | Black Ink

Mirror & Glass

Nothing emphasizes authenticity like the wavy imperfections of mouth-blown glass and decorative wedge cut mirror. Whether you prefer simple Plain Glass or Mirror, the animation of Seeded Glass, the secluded elegance of Frosted or Opal Glass or the subtle distortions of historically accurate Restoration Glass and Antiqued Mirror, each has its own personality and history of its own.



Noblesse Wall Lantern shown with Reproduction Glass and Antiqued Mirror.



Plain Mirror



Antiqued Mirror



Plain Glass



Restoration Glass



Seeded Glass



Opal Glass



Frosted Glass

Candle Sleeves

Complete your handcrafted fixture with a smooth, dripless beeswax or cardboard candle sleeve. For a more traditional look, sleeves are available with drips. Thicker Polyresin Dripless or metal sleeves are also available for more durability and low maintenance. All candelabra fixtures include Dripless Ivory Wax sleeves.

Dripless



White Wax Ivory Wax Natural Wax Ivory Polyresin

Drip



White Wax Ivory Wax Natural Wax Honey Amber Wax

Cardboard



White Beige

Shades

Several Wall Sconces and Chandeliers include either Straight, Traditional or Hurricane hand-blown glass shades to complete the historical adaptation design. Shades can be added to select fixtures upon request.



Lithe Sconce shown with Straight shade and Dripless Ivory Wax candle sleeve.



Straight



Traditional



Hurricane

# Mounting

All Chandeliers, Pendants and Hanging Lanterns include a 5-7/8" canopy and 36" chain unless otherwise noted.

## Ceiling

1. Spun Iron Canopy
2. Spun Brass Canopy
3. Cast Brass Canopy
4. Iron Chain
5. Brass Chain
6. Iron Hollow Hook, Lg
7. Iron Solid Hook, Lg
8. Iron Twisted Hook
9. Iron Hollow Hook, Sm
10. Iron Solid Hook, Sm



Wall Lanterns and Sconces are fabricated with a standard bracket. Custom Large and Small Bracket options shown below. Post Lanterns are accompanied by a 3" post collar with either a Bronze or Iron Post Bracket.

## Wall

11. Custom Bracket, Lg
12. Custom Bracket, Sm

## Post

13. Bronze Bracket
14. Iron Bracket

