

*Scofield*  
SCOFIELD LIGHTING



OPTIONS



Metal Finishes

All metal finishes are hand-applied with heat, technique and time. Decorative gold is gilded with patience, finesse and artistry - something no machine can recreate. We believe that, like the fixture beneath, the finish should withstand the test of time. Custom metal finishes available upon request.



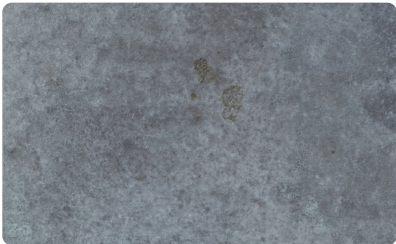
**BZCP**  
Bronzed Copper



**LDCP**  
Leaded Copper



**NACP**  
Natural Copper

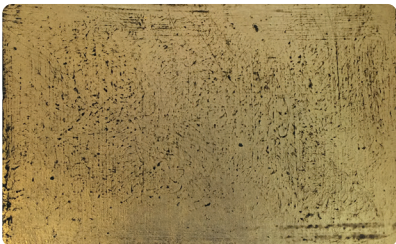


**OXCP**  
Oxidized Copper

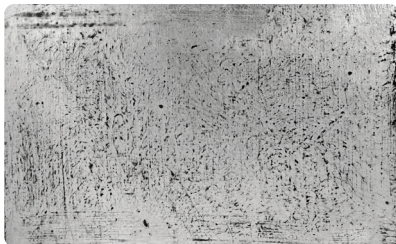


**AGTN**  
Aged Tin (Interior)

Gilding



Yellow Gold Leaf (Interior)



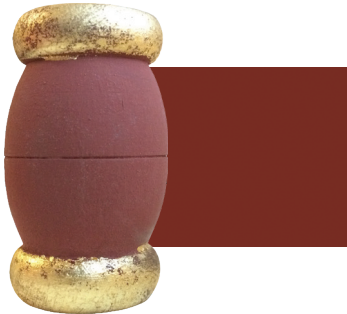
White Gold Leaf (Interior)



*\*\*As with all hand-applied and natural patina finishes, they're meant to produce a random pattern for age and usage. Slight variations are possible and often appear more significant when applied to large surfaces. We can't guarantee an identical match of any sample or swatch.*

Paint Finishes

All wooden lighting fixtures are painted with Genuine Old-Fashioned Milk Paint, using rich, historic, durable colors that won't fade (spindles). All our metal fixtures are painted with equivalent colors of metal-safe paints (flags adjacent to spindles). Custom paint finishes available upon request.



Barn Red | Country Redwood



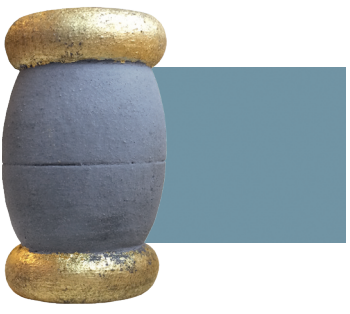
Mustard | Showtime



Snow White | Vanilla Milkshake



Sea Green | Mill Springs Blue



Soldier Blue | Sea Reflections



Federal Blue | Chicago Blues



Lexington | Holiday Wreath



Tavern Green | Cedar Green



Pitch Black | Black Ink



Glass & Reflectors

Nothing emphasizes authenticity like the wavy imperfections of mouth-blown glass and decorative wedge cut mirror. Whether you prefer simple Plain Glass or Mirror, the animation of Seeded Glass, the secluded elegance of Frosted Glass or the subtle distortions of historically accurate Restoration Glass and Antiqued Mirror, each has its own personality and history of its own.



Candle Sleeves

Complete your handcrafted fixture with a smooth, dripless beeswax or cardboard candle sleeve. For a more traditional look, sleeves are available with drips. Thicker Polyresin Dripless or metal sleeves are also available for more durability and low maintenance. All candelabra fixtures include Dripless Ivory Wax sleeves. Shade variation may occur.



Shades & Clusters

Most single lamp lanterns include Straight or Traditional hand-blown glass shades to complete the historical adaptation design. Three lamp lanterns are fabricated with either a base or hanging cluster.

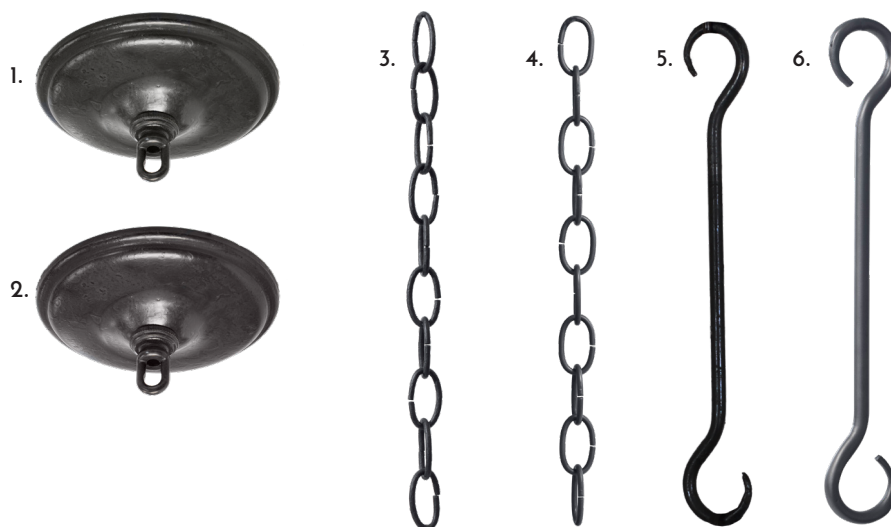


# Mounting

All Chandeliers, Pendants and Hanging Lanterns include a 5" canopy and 36" chain unless otherwise noted.

## Ceiling

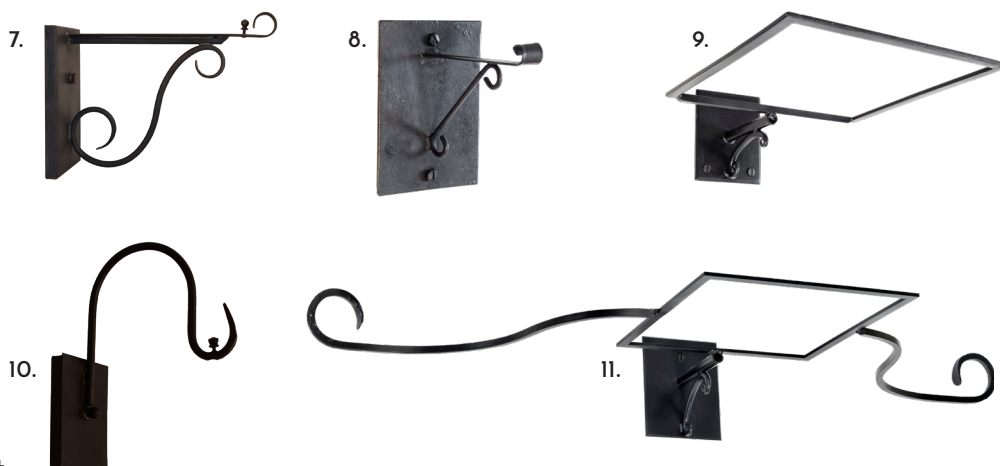
- 1. Aged Tin Canopy
- 2. Bronzed Canopy
- 3. Aged Tin Chain
- 4. Bronzed Chain
- 5. Aged Tin Hook
- 6. Bronzed Hook



Wall Lanterns and Sconces are fabricated with a direct mount or standard bracket noted in product description. Alternate options shown below. Post Lanterns are accompanied by a 3" collar with an optional Bronze or Iron Bracket.

## Wall

- 7. Straight Arm Bracket
- 8. Faux Bracket
- 9. Lantern Yoke Bracket
- 10. Gooseneck Bracket
- 11. Wing Bracket
- 12. Shepherd's Crook Bracket



## Post

- 13. Cradle Mount Bracket
- 14. Bronze Bracket
- 15. Iron Bracket

